

Towel Ring
37-09

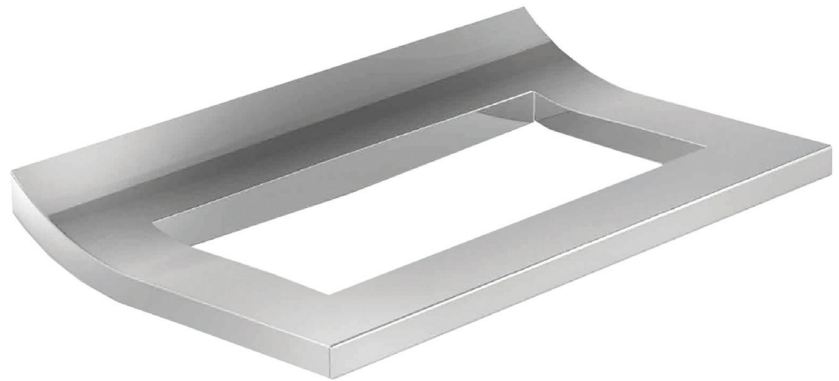
Features

- Solid brass construction
- Double-post design with rigid straight bar
- Complements Secant product series

Codes / Standards Compliance

Meets or exceeds the following at date of manufacture:

- All applicable US Federal and State material regulations



Colors / Finishes

- 10B: Oil Rubbed Bronze
- 15: Polished Nickel
- 15S: Satin Nickel - PVD
- 26: Polished Chrome
- Other: Refer to the Newport Brass catalog for additional color/finish options.

Specified Model

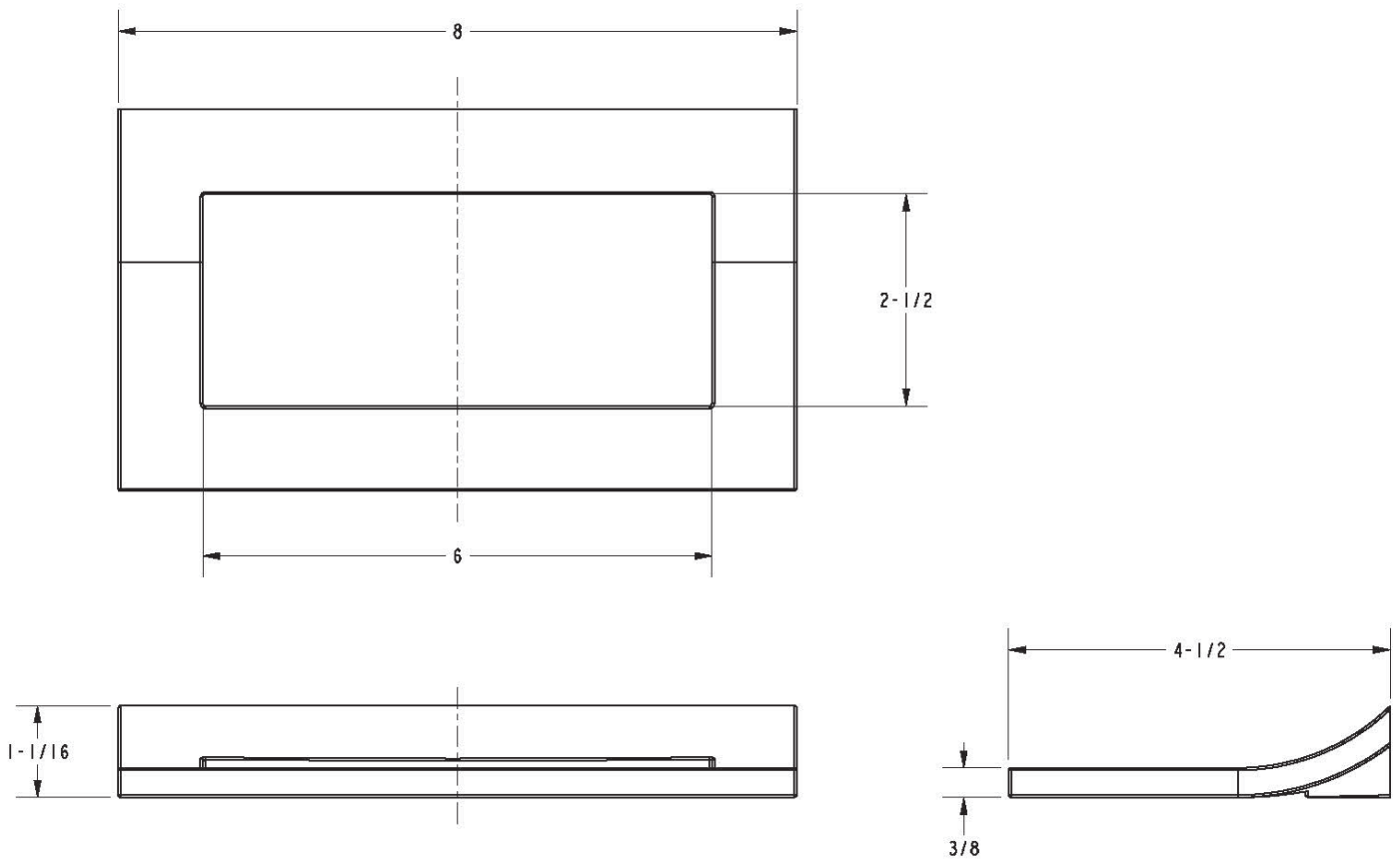
Model	Description	Colors Finishes
37-09	Towel Ring	<input type="checkbox"/> 10B <input type="checkbox"/> 15 <input type="checkbox"/> 15S <input type="checkbox"/> 26 <input type="checkbox"/> Other

Product Specification: Add "Color / Finish" suffix to Model number, below.

The Towel Ring shall be made of solid brass construction and incorporate a double-post design with rigid straight bar. Towel Ring shall complement Newport Brass Secant product series. Towel Ring shall be Newport Brass Model 37-09/_____.

37-09

PRODUCT DIMENSIONS *(Units are in inches)*



Priya Towel Ring
37-09